



# OPS Bulletin

## Proper Chock Placement

*June 26, 2019*

Proper chock placement on aircraft wheels are essential to ramp safety. Most incidents of inadvertent movement of a parked aircraft are due to the improper use or placement of chocks. Chocks should be placed in front of and behind both main wheels in order to adequately prevent movement and protect employees and equipment.



Figure 1: Proper Placement of Chocks; both in front of and behind main wheels

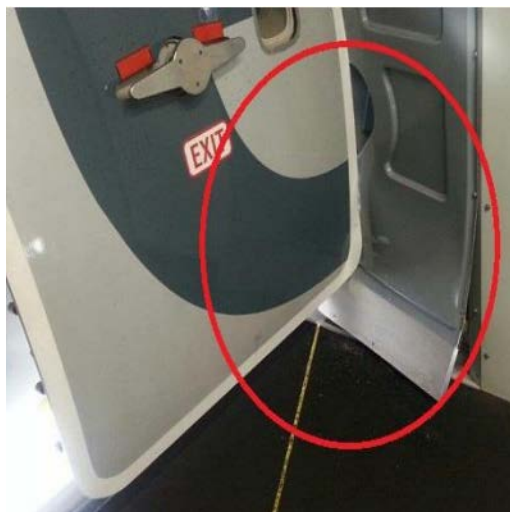


Figure 2: Due to improper placement of chocks, the aircraft rolled about 12 feet. The L2 Cabin Door made contact with the Passenger Boarding Bridge (PBB), resulting in significant damage to both the aircraft and the PBB.