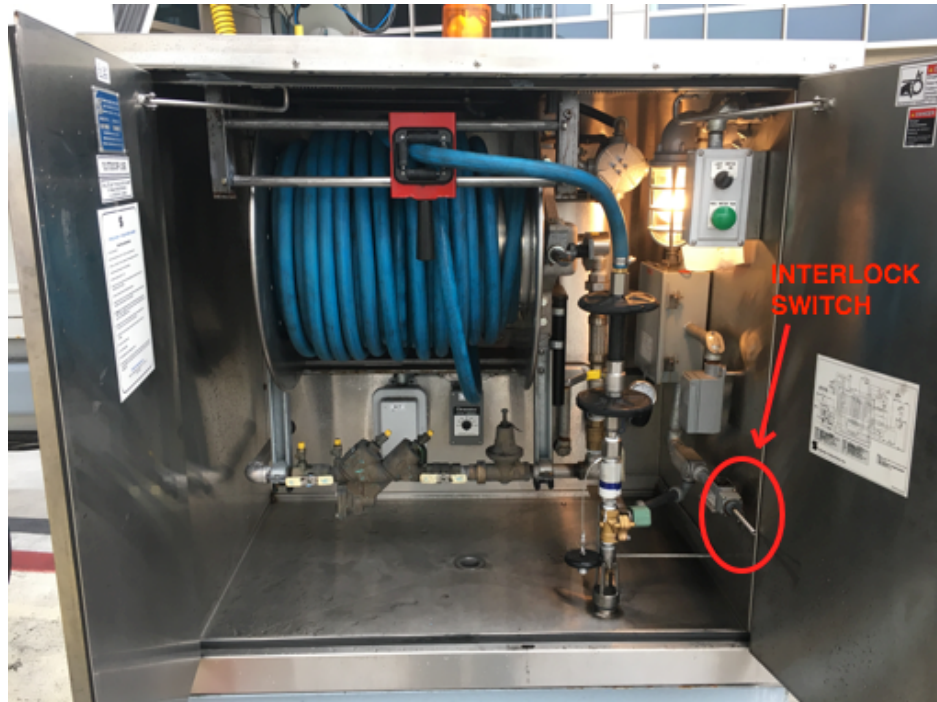




# OPS BULLETIN

## **SAFETY ALERT: PBB SAFETY INTERLOCK SYSTEM/WATER STATION**



The passenger boarding bridges are installed with a safety interlock sensor. This component will prevent movement of the passenger boarding bridge while the potable water hose is in use supplying water to the aircraft. Both doors are required to be fully open during the water recharge process in order to prevent the PBB from being moved. Failure to do so may result in serious damage to aircraft.

*Please contact the TBITEC Duty Manager Hotline for any questions or concerns at:  
(310) 646-9378*