

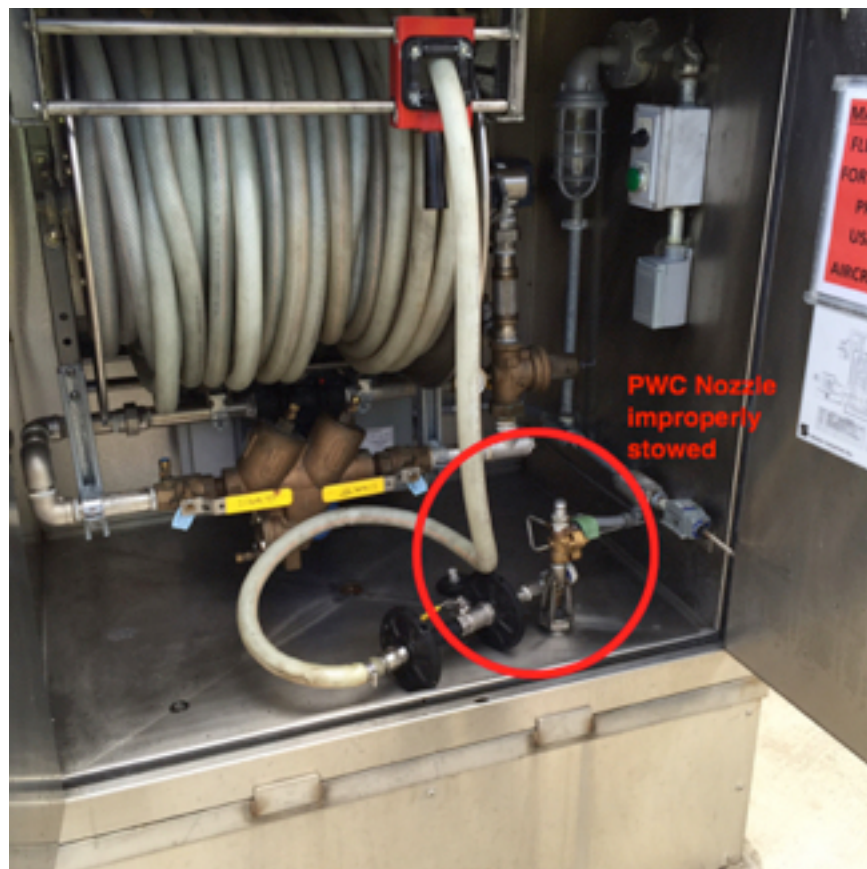


OPS BULLETIN

Potable Water Cabinets Hygiene

Proper use of the Potable Water Cabinets (PWC) and hoses have been observed on an increasingly frequent basis. These infractions increase the contamination risk and drinkability of the potable water supply. Top three findings:

- 1) Hose not properly stowed on auto-flush bracket in the cabinets.
- 2) Hose found laying on the AOA/ramp.
- 3) Service providers recharging lavatory trucks overnight.





OPS BULLETIN



These actions increase the potential of contaminating the potable water supply.

Service Providers must regularly brief their staff to correctly use the PWC equipment to minimize future equipment outages that directly impact air carrier operations.