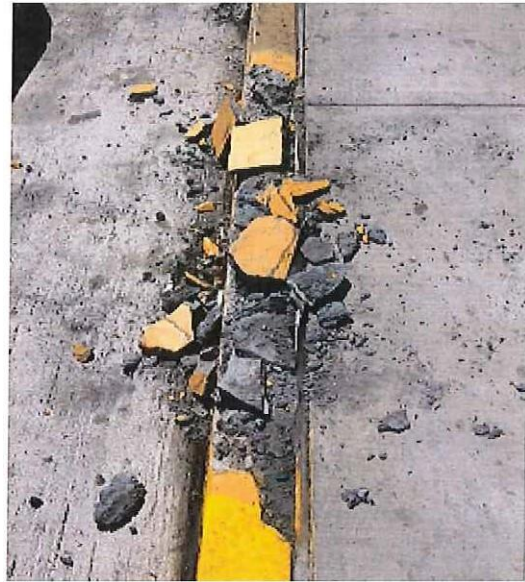




OPS BULLETIN

REPORTING FACILITY DAMAGE

With the airport as large as it is, it can be easy for facility damage to go unnoticed. In order to keep up with terminal maintenance we rely on all airport staff who observe damages to report them to the **LAWA Help Desk** at **310-646-3276**.



Reporting facility damages to LAWA allows them to dispatch the proper personnel to begin repairs as soon as possible. The damage is unpleasant for the passengers and the debris can cause harm to visitors, employees and equipment.

This bulletin should serve as a reminder to all airport personnel that we share a collective responsibility in keeping the terminal and the AOA safe.

For any questions or concerns please contact the **TBITEC Duty Managers' Hotline** at **310-646-9378**