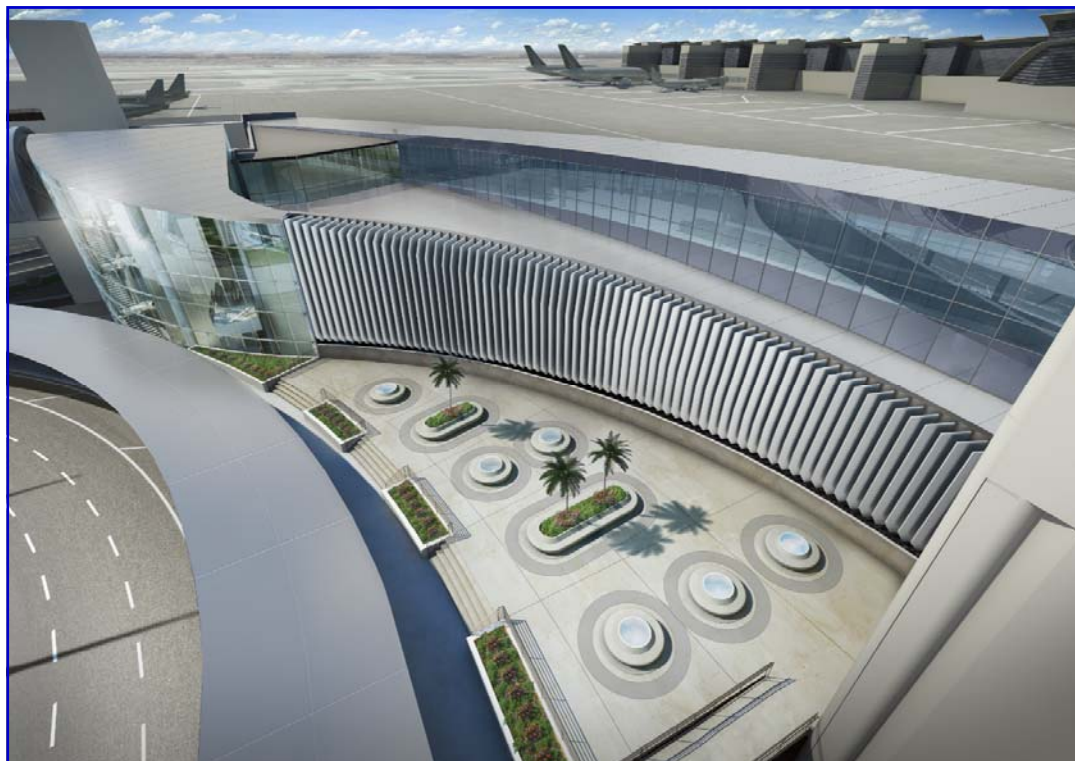
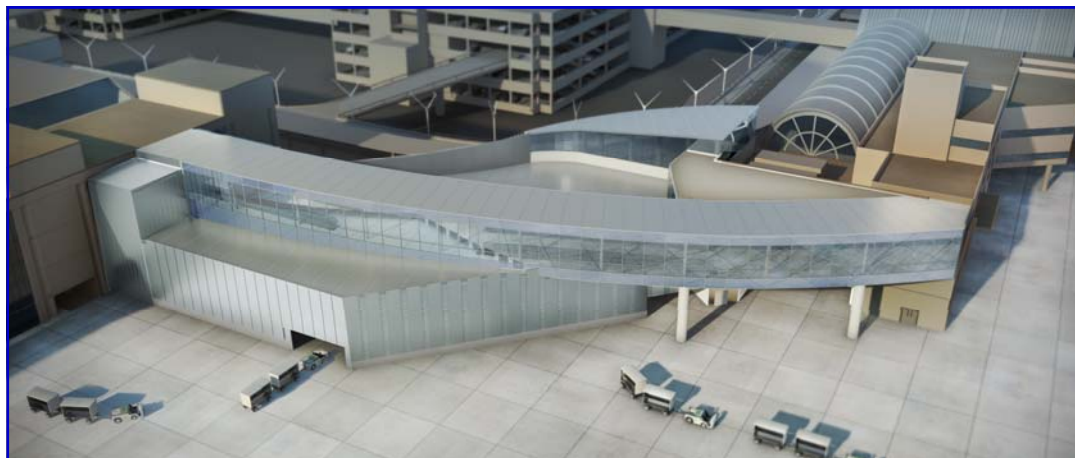


# TBITEC Newsletter



## TBITEC Office Relocation

In preparation for the airside passenger connection between TBIT and Terminal 4, the TBITEC conference room, training rooms and administration offices have relocated from the 5th level of the south tower to a new space on the 4th level of the north tower. The 5th level of the south tower will provide LAX with a facility that allows domestic to international connecting passengers easy access between Terminal 4 and TBIT on the secure side of the Security Screening Check Point (SSCP). In addition to this new connection, the Terminal 4 Connector Project, shown in the below renderings, will produce a multi-use, multi-level facility including a Checked Baggage Inspection System and Baggage Handling System (CBIS/BHS) for Terminal 4, a new interline baggage transfer facility for TBIT, a five lane TSA SSCP and a passenger bus port which will connect a international arriving passenger to other terminals via an airside bus.



**TBITEC**

TBITEC  
380 World Way  
Box S - 18  
Los Angeles, CA 90045  
Phone: 310 - 646 - 9378  
Fax: 310 - 646 - 2981  
SITA: VNYLXCR

Published for TBITEC by:

**AvAirPros**

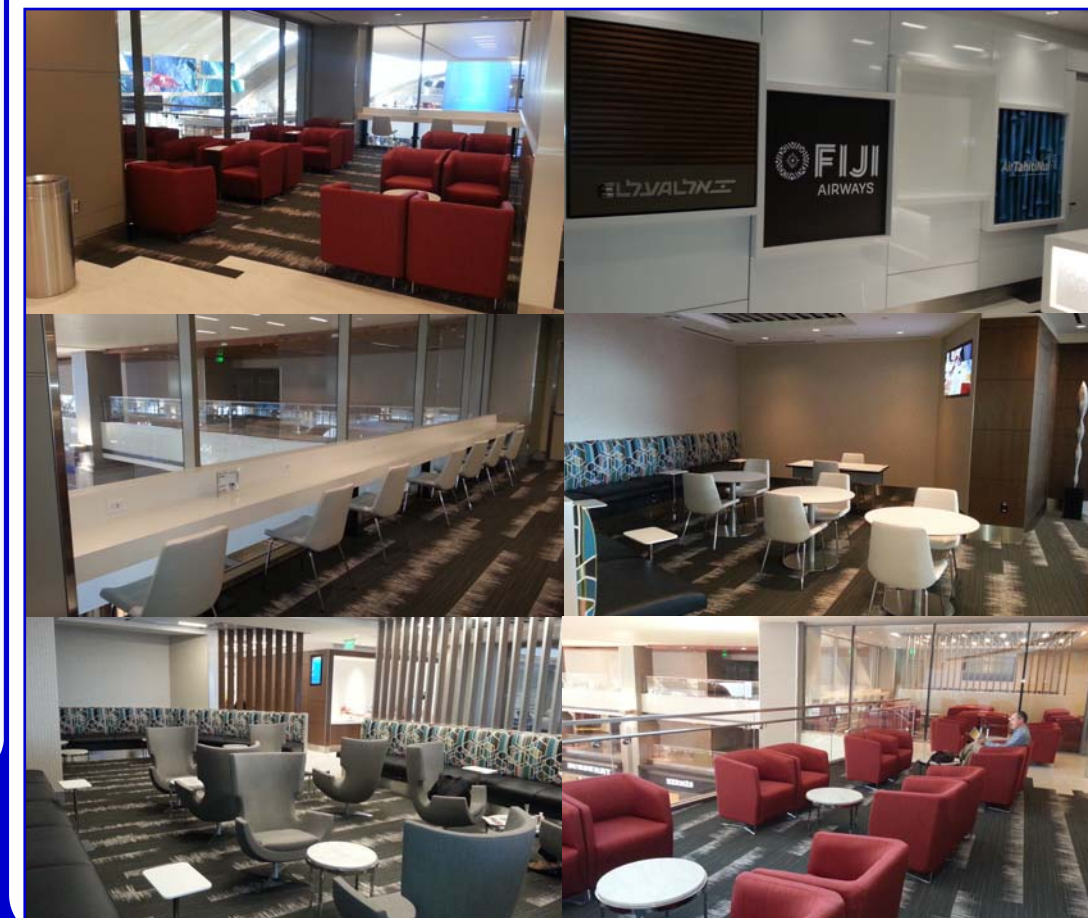
## Los Angeles International Lounge

Located on the sixth floor of the Bradley West Central Core is the new Los Angeles International Lounge that opened in July 2014. With close to 100 seats it provides premium passengers with comfort, first class amenities and unparalleled views on the terrace.

Demolition of the old lounge is a critical step that clears the way for the construction of the consolidated TSA Security Screening Check Point on the mezzanine level and direct access for all passengers to the 'bon Voyage' electronic display and grand entrance into the Central Core.

### Inside This Issue

- Central Terminal Area & Roadway Impacts **2**
- TBITEC Office Relocation **3**



**AvAirPros**

## Central Terminal Area & Roadway Impacts

As improvements to the facility, terminal operations and passenger experience continue at T2 and TBIT, there is major construction at the other terminals as well as the CTA. This construction includes utility upgrades, CCTV camera installations, escalator/elevator upgrades and complete terminal renovations. Some of the more significant impacts occur at the CTA which includes the CUP, parking structures, sidewalks and roadways as depicted in the below graphic. LAWA is in the process of repairing the second level roadway which will have nightly closures and impact vehicular traffic around LAX. It is important to remember as the impacts test the patience of the airline community that these projects are required to improve the overall customer service at LAX.

In order to be informative to the public and LAX community, LAWA has developed several programs and formats to understand as well as track progress on the multi-billion dollar modernization program. These sources include C.A.L.M. (Coordination and Logistics Management Team), Connect2LAWA, LA-Next, LAX IS HAPPENING, the LAWA website, as well as the official LAX Facebook account and twitter feed. In addition to social media, LAWA has implemented graphical icons to alert the traveling public that there is construction and to be alert, patient as well as accommodating during their LAX experience. It is recommended that all airlines use the information available to inform employees and passengers of these temporary impacts during construction.



[www.lawa.org/laxdev](http://www.lawa.org/laxdev)

LAX IS HAPPENING™



C.A.L.M. Coordination and Logistics Management Team

